



Mail Server

MLS-1000



Nusoft MLS-1000, an easy-to-use, dedicated mail server, presents you with a one-stop email service solution, including anti-spam, anti-virus, DNS resolving, etc. It requires no complex commands and IT expertise, whether for installation, configuration or maintenance. To top it off, it also offers additional survivability with real-time high availability (HA), mailbox disaster recovery and more to ensure email service continuity.

As for business operating costs, the signatures for spam and viruses (ClamAV) as well as the firmware updates are available for free downloads without user limit, greatly reducing the ownership of a mail server. In addition, its all-in-one design accommodates Web server, Web disk and other features for facilitating your efforts on network services.

Product Features

Full-Featured Embedded Email System

Apart from reliability and stability derived from the embedded hardware design, it comes equipped with features such as Web mail, anti-spam, anti-virus and DNS resolving, as well as supports the protocols of SMTP(s), POP3(s) and IMAP(s), providing all the necessities for implementing an email system.

Advanced Email Service Continuity

MLS-1000 ensures email service continuity by employing the following mechanisms:

Real-time high availability:

Ensures email service continuity against unexpected hardware failure.

Mailbox disaster recovery:

Performs routine backups of a mailbox to a backup server (e.g., NAS) and from which the mailbox is restored in the event of HDD failure.

Hot-swappable power redundancy:

Features 1+1 power redundancy to provide sustainability.

Easy-to-Use Mail Server

Simple installation:

Eases you through the installation with a step-by-step wizard, helping you get the job done in no time.

Hassle-free migration:

Migrates emails and accounts to MLS-1000 without intervention, avoiding the risk of message loss due to human errors or domain migration.

Habitual Web Mail:

Offers an easy email experience with its MS Outlook Express- / Gmail-like user interface.

User-friendly UI:

Requires no complex commands and IT expertise for operation; all device operations are done via a Web browser without prior software installation.

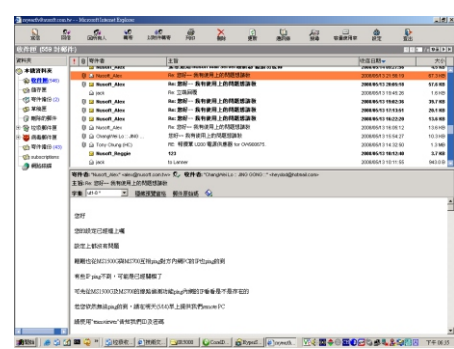
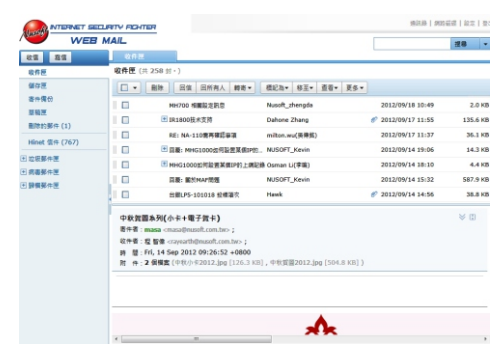
Effortless maintenance:

Helps pinpoint failed email deliveries with comprehensive reporting.

Easy archival access:

Archives emails to a backup server (e.g., NAS or Samba) for long-term retention; all emails can be easily searched by a range of criteria and viewed in multilingual contexts (due to UTF-8 encoding).

Gmail-like UI



MS OE-like UI

Multi-Domain / Domain Alias

Two domain planning approaches are provided as following:
(Assuming there are two domains in your plan, namely "abc.com" and "123.com".)

Multi-Domain:

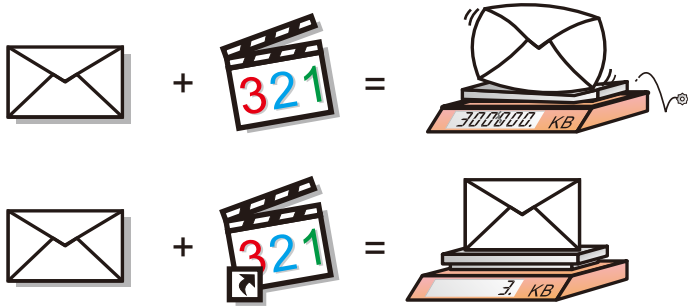
Accommodates multiple domains on MLS-1000 to provide non-interconnected email systems, e.g., a@abc.com#123.com.

Domain Alias:

Entitles a domain with a number of aliases; each alias is interconnected with the domain name, e.g., a@abc.com = a@123.com.

Large Attachment Delivery

The Web Disk feature not only offers users with an individual storage space but also makes large attachment available for email delivery, efficaciously preventing bounces due to the size.



Mobile Web Mail (email client app)

The access to MLS-1000's Web Mail is made easy through a dedicated email client app (available for iOS and Android devices). Users are provided with real-time correspondence through notification feature, as well as capabilities to check, move, or delete messages, simply by swiping your finger.



Multi-Layered Email Service Protection

Anti-spam:

Reaches at 99% spam-filtering accuracy using Fingerprint, Bayesian, RBL, SPF, DomainKey, Greylist, Auto-Whitelist, etc.

Anti-virus:

Filters out viruses and malicious code concealed within emails using ClamAV scan engine (free signature updates).

Mail notice:

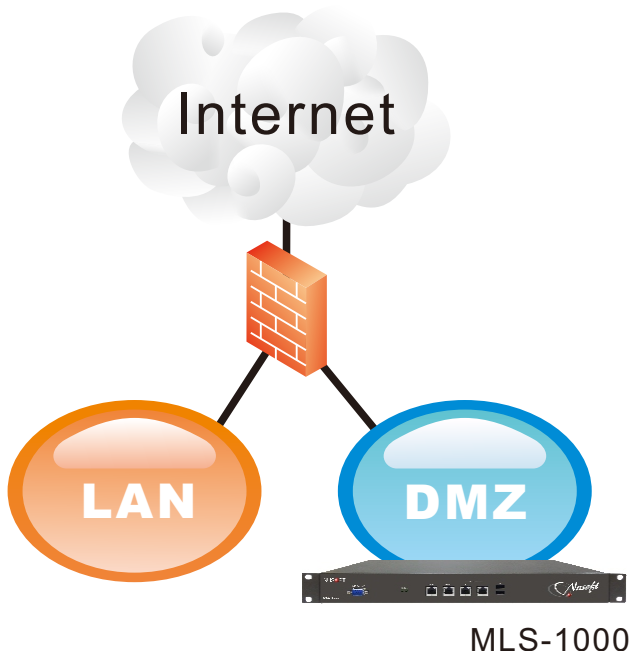
Notifies recipients of quarantined emails as well as allows them to retrieve those without the intervention of network administrator.

Anti-email attack:

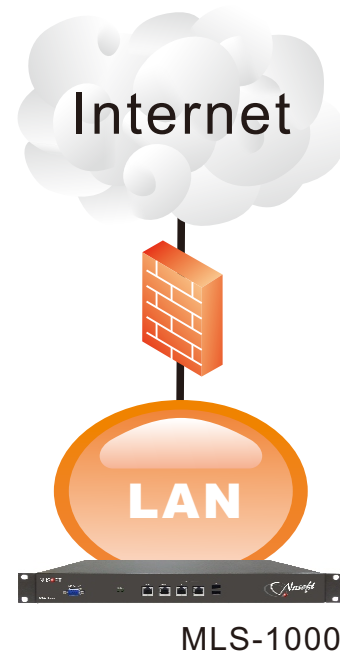
Protects mail server from DoS attacks, dictionary harvest attacks, etc.

Deployment

1. Deployed in DMZ
(using public IP)



2. Deployed in LAN
(using private IP)





Product Highlights

Highlight	Benefit	Third-Party Product
Email security filtering	Avoids reputation damage incurred by email abuse, compromised email accounts, computer viruses, etc.	Unable to prevent the exploitation of local email accounts for spamming, which leads to failed email deliveries due to being listed on RBL.
Remote backup access	Provides around-the-clock access (search, browse and retrieval) to email backups simply via a Web browser.	The access to nearline email archives is limited and no remote access is provided.
Filtered email archiving	Saves disk space by archiving only the legitimate emails rather than unsolicited or virus-infected ones.	Archives emails without preliminary spam filtering, wasting a huge amount of disk space.
Multi-domain / Domain alias	Not only entitles an email domain with several aliases but also accommodates multiple domains on MLS-1000 to meet different business demands.	Not available. It takes as many servers as it needed to achieve the purpose.
Comprehensive email reporting	Offers detailed email logs along with contrack logs and queue status to assist in pinpointing the cause of a failed email delivery.	Available but not desirable. It requires extensive analysis to identify the cause of a failed delivery.
Anti-email attack	Protects email system from various email attacks (e.g., DoS attack, dictionary harvest attack, etc.), ensuring service reliability and continuity.	Not available. Email system is vulnerable to attacks, and consequently fails to provide reliable email service.
Real-time high availability	Ensures email service continuity against unexpected hardware failure by using real-time high availability. The standby unit will take over the operations as the active one breaks down.	Only provides basic high availability feature; besides, recent emails might be lost due to the asynchronous operation between two HA units.
Mailbox disaster recovery	Performs routine backups of a mailbox as well as restores the mailbox in the event of HDD failure.	Not available. Emails will be gone once the inbuilt HDD has failed.
Custom account privileges	Allows email account privileges to be based on network policies, such as limiting the email access to LAN only.	Neither email account privileges are configurable, nor is any control over email access provided.
Hassle-free migration	Automatically migrates emails and accounts to MLS-1000 without intervention.	Requires manual operation to migrate emails and accounts, which is troublesome and risky.
Large attachment delivery	Features Web Disk to prevent email bounces due to the large attachment size.	Not available. Sending a large attachment will result in email bounces.
Mobile Web Mail (email client app)	The mobile access to MLS-1000's Web Mail is provided through a dedicated email client app.	No dedicated user interface designed for mobile devices.
TNEF decoding (for Winmail.dat files)	Supports TNEF-encoded messages sent from Microsoft Outlook.	Not available. Messages encoded in Transport Neutral Encapsulation Format (TNEF) will be unreadable.
Email Session Encryption (SMTPS / POP3S / IMAPS)	Encrypts email sessions using TLS and SSL protocols to avert network sniffing attacks.	Not available. Messages are vulnerable to network sniffing attacks.



Mail Server



Anti-Virus



Anti-Spam



Session Encryption



Bi-Directional Filtering



Mail Notice



Web Mail



Mobile Web Mail (email client app)



Web Disk



Multilingual Support



Online Archive Access



Contrack Logs



Anti-Email Attack



DNS Server



Large Attachment Delivery



Real-Time High Availability



Web UI Management



Web Hosting

MLS Series Product Comparison

Model	MLS-800	MLS-1000	MLS-1500	MLS-2500	MLS-3500
Specifications					
HDD Capacity	500GB	500GB	500GB	1 TB	1 TB
No. of NIC Ports	4 GbE (RJ45)	4 GbE (RJ45)	4 GbE (RJ45)	2 GbE (RJ45) 6 GbE (+ 4-port SFP module)	2 GbE (RJ45) 6 GbE (+ 4-port SFP module)
0dBA Fanless Design	○	×	×	×	×
Form Factor	9" Desktop	1U Rackmount	1U Rackmount	1U Rackmount	2U Rackmount
1+1 Power Redundancy	×	×	×	×	○
Features					
Installation Wizard	○	○	○	○	○
Hassle-Free Migration	Account Migration	○	○	○	○
	Email Migration	○	○	○	○
Web Mail	○	○	○	○	○
Mobile Web Mail (email client app)	○	○	○	○	○
Web UI Management	○	○	○	○	○
Email Security	Anti-Virus	ClamAV	ClamAV	ClamAV · Sophos	ClamAV · Sophos
	Anti-Spam	○	○	○	○
	Mail Reports	○	○	○	○
	Mail Notice	○	○	○	○
	Email Auditing / Archiving	×	×	○	○
	Remote Email Backup	○	○	○	○
Multi-Domain / Domain Alias	○ / ○	○ / ○	○ / ○	○ / ○	○ / ○
Web Disk (for large email attachment)	○	○	○	○	○
TNEF Decoding (for Winmail.dat files)	○	○	○	○	○
Auto-Carbon Copy	○	○	○	○	○
Contrack Logs	○	○	○	○	○
Queue Management	○	○	○	○	○
E-Paper	×	×	○	○	○
DNS Resolving	○	○	○	○	○
Basic Web Hosting	○	○	○	○	○
Real-Time HA	○	○	○	○	○