

# Multi-Homing Gateway NUS-MH300



A single WAN connection is risky for companies with a heavy reliance on information technology due to the consequences of disconnections. To avoid profit loss, the best policy is to deploy a network with a failover mechanism. Accordingly, NUS-MH300 comes equipped with firewall, link failover, load balancing, VPN solution (IPSec / PPTP VPN), QoS, AAA server (Authentication, Authorization, and Accounting), content blocking, anomaly traffic detection, and more to not only provide multi-homing capability, but to help manage the bandwidth and users with a reasonable yet cost-effective means.

## Product Features

### Outbound Load Balancing

The device can load-balance outbound traffic evenly across WAN ports based on various load-balancing algorithms. It efficaciously makes the most of your bandwidth and ensures you with a reliable connection.

### Content Blocking

It allows IT administrators to gain control over IM clients, P2P software, URL addresses, ActiveX controls, Java applets, browser cookies, pop-up windows and file extensions (files uploaded / downloaded via HTTP/FTP).

### AAA Server

**Authentication:** Identifies users using either internal or external (i.e., RADIUS and POP3) authentication.

**Authorization:** Decides what kinds of activities, resources, or services a user is permitted.

**Accounting:** Provides detailed session statistics and usage information for network policy adjustment.

### VPN Ready

With the policy-based VPN support, namely IPSec and PPTP VPN, it allows you to establish secure, private connections.

### Anomaly Traffic Detection

NUS-MH300 is able to block packet-flooding attacks and notify related personnel of the event, efficaciously stopping Denial-of-Service attacks.

Internal IP	Internal Port	External Port	External IP	External Port	Service
192.168.1.1	80	0.0.0.0	172.18.18.8	80	HTTP
255.255.255.0	80	0.0.0.0	255.255.0.0	80	HTTP

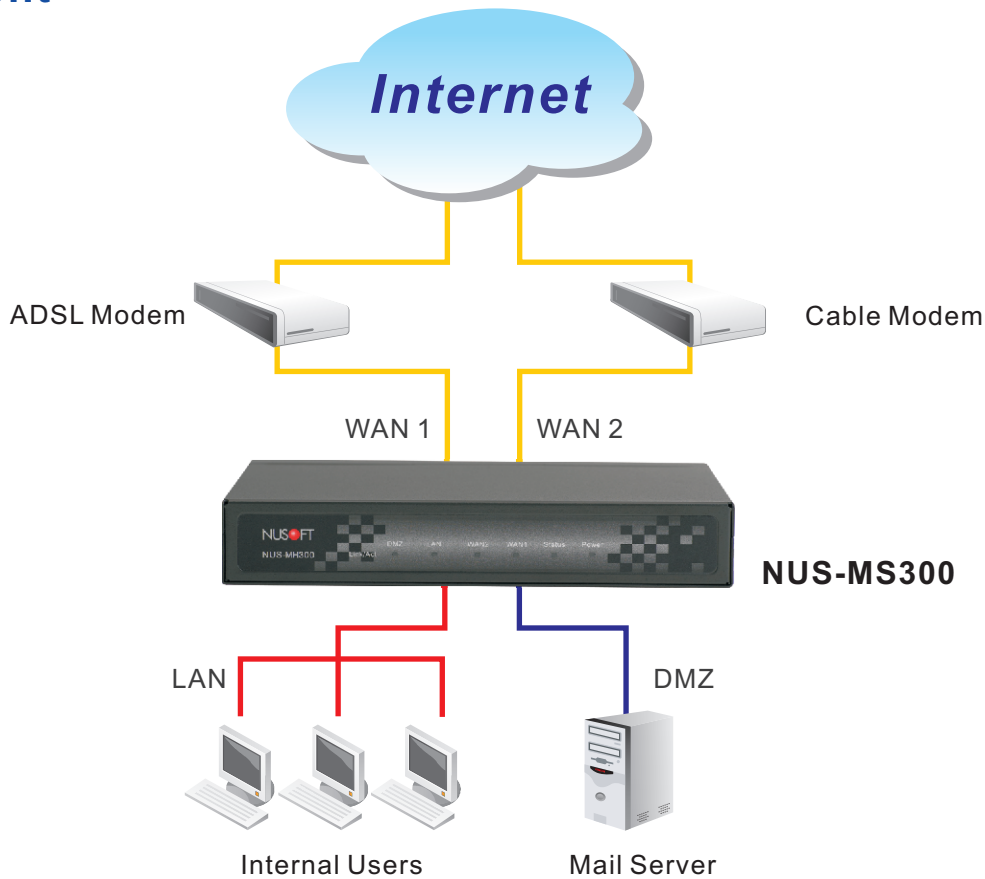
Serial	IP	Bandwidth	Usage	Usage %	Start Time	End Time		
1	192.168.1.8	2.6 KB	31.4%	31.7%	01:01:30:39:25	01:01:30:12:12	30:30:46	
2	192.168.1.4	1.3 KB	15.4%	15.5%	01:01:30:39:39	01:01:30:39:39	30:30:24	
3	192.168.1.3	1.3 KB	15.4%	15.5%	01:01:30:39:15	01:01:30:39:39	30:30:22	
4	192.168.1.5	1.3 KB	15.7%	15.8%	01:01:30:39:34	01:01:30:39:25	30:30:21	
5	192.168.1.2	1.1 KB	12.8%	12.2%	01:01:30:37:53	01:01:30:39:15	30:30:12	
6	192.168.1.7	8000 B	7.1%	60.0 B	7.2%	01:01:30:19:13	01:01:30:19:22	30:30:34
Total		0.2 KB		0.1 KB				

## Product Highlights

- ⊙ Evenly load-balances outbound traffic across WAN ports, automatically routing the traffic of a failed connection through other connections.
- ⊙ Allows IT administrators to base the bandwidth allocation on the company's network policy, preventing bandwidth being exhausted by minorities.
- ⊙ Prohibits IM clients (MSN, Yahoo!, Skype, ICQ, QQ, etc.) and P2P software (BitTorrent, eDonkey, etc.) from being used for recreational purposes.

- ⊙ Provides authentication (user identification), authorization (access permission), and accounting (usage information) services for easy management using an AAA server.
- ⊙ Informs the targeted user and IT administrator of the detection of any packet-flooding attack allowing it to be resolved during its initial stage.

## Deployment



## Hardware Specifications

### Onboard Ethernet ports

Auto-sensing 10/100 Mbps ports

### Management interface

Web-based over HTTP/HTTPS

### Protocols supported

ARP, TCP/IP, UDP, ICMP, DHCP, HTTP, IPSec, FTP, SMTP, POP3 and IKE

### Network interface

LAN: 1 x RJ45 FE port  
 WAN: 2 x RJ45 FE ports  
 DMZ: 1 x RJ45 FE port  
 Console: 1 x RS232 serial port (DB9 male connector)

### Environmental operating ranges

Operating temperature: 32 to 140°F (0 to 60°C)  
 Operating humidity: 5 to 95%

### Electromagnetic certifications

FCC, CE

### Dimensions (D x W x H)

5.78 x 8.54 x 1.41 in. (14.7 x 21.7 x 3.6 cm)

### Power specifications

DC input voltage: 5V ⎓ @2.4A

### Form factor

9-inch desktop unit

## Model Comparison

Model Name		NUS-MH300	NUS-MH700
<b>Hardware Specifications</b>			
Port Density	WAN	2 Fast Ethernet (RJ45)	2 Fast Ethernet (RJ45)
	LAN	1 Fast Ethernet (RJ45)	1 Fast Ethernet (RJ45)
	DMZ	1 Fast Ethernet (RJ45)	1 Fast Ethernet (RJ45)
Form Factor		Desktop (9")	1 U Rack-Mount (19")
Network Scale		20 to 30 users	30 to 70 users
<b>Product Features</b>			
SPI Firewall		✓	✓
Load Balancing		Outbound only	Outbound only
QoS		✓	✓
Individual QoS		✓	✓
VPN	IPSec VPN	✓	✓
	PPTP VPN	✓	✓
	VPN Trunking	✗	✓
	SSL Web VPN	✗	✓
Application Blocking	Instant Messaging	✓	✓
	File Transfer over IM	✓	✓
	P2P Sharing	✓	✓
	Media Streaming	✗	✗
	Web-Based Mail	✗	✗
	Online Gaming	✗	✗
	Tunneling	✗	✗
Remote Controlling	✗	✗	
AAA Server (Authentication / Authorization / Accounting)		✓	✓
Anomaly Traffic Detection		✓	✓
Content Blocking ( URL / Java Applet / Download / Upload)		✓	✓
Supported Authentications		RADIUS / POP3	RADIUS / POP3
High Availability		✗	✗
Max. Concurrent Users		Unlimited	Unlimited
<b>Performance Statistics</b>			
Throughput	WAN<=>LAN	140 Mbps	190 Mbps
	IPSec VPN (3DES)	20 Mbps	35 Mbps
	SSL VPN (3DES)	✗	10 Mbps
Max. Concurrent Sessions		45,000	110,000

Nusoft Corporation  
 Tel: +886-2-8226-6789 Fax: +886-2-8226-6488  
 Address: 3F-1, No. 880, Zhongzheng Rd., Zhonghe Dist.,  
 New Taipei City 235-86, Taiwan (R.O.C.)

<http://www.nusoft.com.tw>  
 Sales Department: [sales@nusoft.com.tw](mailto:sales@nusoft.com.tw)  
 Technical Support: [support@nusoft.com.tw](mailto:support@nusoft.com.tw)